

All Transfer Printers

m4



M4 - The model for starters

with USB and Ethernet interface as standard

Print resolution	dpi	203	300
Print speed	mm/s	150	100
Print width	mm	104	108.4
Liner width	mm	120	120

a3



A3 - The universal printer

with printhead up-grade 203 to 300 dpi

Print resolution	dpi	203	300
Print speed	mm/s	200	150
Print width	mm	104	108.4
Liner width	mm	120	120

a4



A4 - The fast one

prints up to 250 mm/s

Print resolution	dpi	300
Print speed	mm/s	250
Print width	mm	105.6
Liner width	mm	120

a4
600



A4 - The precise one

prints with 600 dpi

Print resolution	dpi	600
Print speed	mm/s	100
Print width	mm	105.6
Liner width	mm	120

a6



A6 - The wide one

for labels up to 176 mm width

Print resolution	dpi	300
Print speed	mm/s	200
Print width	mm	162.6
Liner width	mm	180

a8



A8 - The extra wide one

for labels up to 220 mm width

Print resolution	dpi	300
Print speed	mm/s	150
Print width	mm	216.8
Liner width	mm	235

The Printers convincing basic Benefits



The Robust Housing

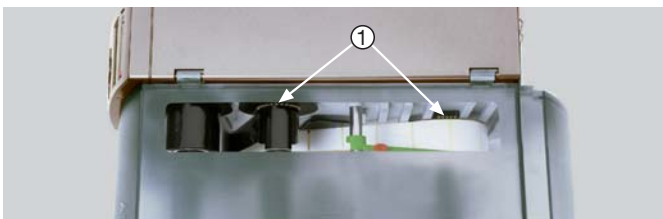
The center mounting plate, rear plate and base plate are manufactured from die-cast aluminum. The print mechanics, both the ribbon supply and ribbon take-up spindles, and the rewinders are fixed precisely at the center mounting plate. Both spindles are mounted in ball bearing washers which provide stability in the spindle's tension.

This ensures the highest level of stability even under rough conditions.



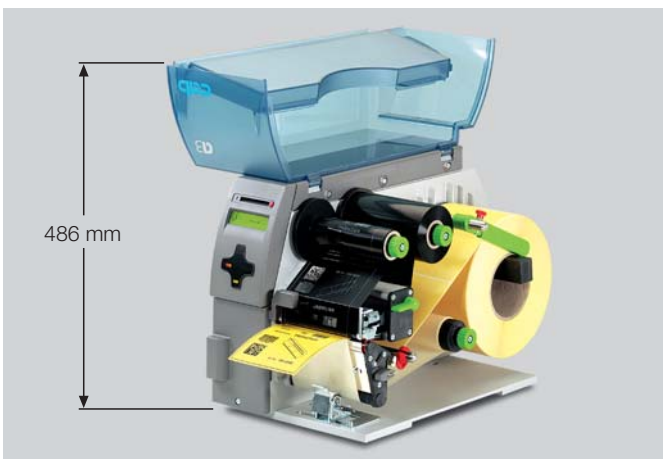
Large Media Window

The large media window is located on the side of the printer to allow easy viewing and monitoring of the remaining label stock and ribbon.



Top Media Window

With the top media window you can even monitor narrow label stock and ribbon. Indicators ① on the label and ribbon hubs tell the user when it's nearly time to load more media.



The most compact printer in its class

For space-saving purposes, the two-piece cover conveniently folds while opening.

In vertical position, the cover can be easily removed without using any tool.

Easy Handling

Easy Loading of Labels and Ribbon

The revolving media retainer secures even small label rolls in place. The diameter of the axis can be increased or decreased for easy loading and unloading of ribbon and liner.

Memory Card

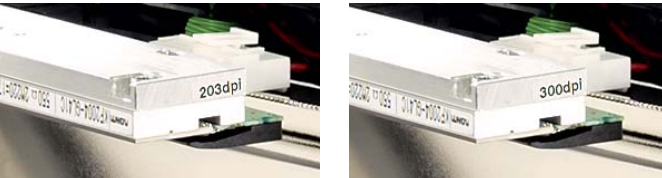
On the CompactFlash memory card you can store label formats, fonts, text and graphics. The card can be loaded in the printer or using a PC.

Graphic Display

The graphic display monitors the current status of the printer and shows operation hints in 22 languages.

Convenient Navigator Pad

The Navigator Pad allows clear operation control. The illuminated keys highlight the active functions. With the graphic display the operation is easy to understand.



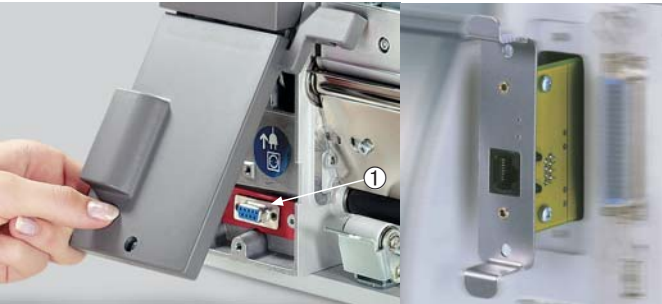
The A3: Printing with 203 or 300 dpi in one device

You can change quickly and easily the printhead from 203 to 300 dpi (or reverse) without making adjustments on the printer. At power up, a printhead diagnosis will automatically detect the type of printhead and examine all dots for functionality.

Automatic Print Positioning

After loading a new roll of labels and pressing the Feed key, the print position will be detected after only dispensing a couple labels. The label position is now held in memory when you turn off the printer. The next time you turn on the printer, he will actually print without wasting the first label.

Modular Construction



Plug & Play Peripheral Accessories and Simple Interface Additon

Simply connect the accessory to the peripheral port ① and mount the assembly in front of the print rollers. The interface extension slot can be used to add another interface. The printer automatically senses where the data is coming from and at once the device is ready for the job.



Maintenance and Service



Printhead

The printhead opens wide for easy cleaning. In this position the printhead can be exchanged easily.



Label Gap Sensor

The label gap sensor can be removed completely with one touch of a finger and simply pulling it out. The bottom is flat without dirty corners.



Print Roller

For cleaning or replacement, the print roller can be easily removed simply by loosening three screws.



One Tool for all Maintenance Tasks

For adjustments, attaching accessories, additional interfaces or spare parts an Allen key is the only tool needed, which is included with every printer.

The right Accessories for every Application



P-version with present function

Dispensing Labels

On the present plate the label is peeled off from the liner. The imprint and dispense quality is very high due to the additional driven rewind assist roller and the locking system.

There are three present modules to handle the present function:

PS 8: Present sensor for the A/M-Series manual operation



The present sensor indicates the label in the present position and stops the printing job. After removing of the label, the next one is printed.

PS 6: Present sensor for the A-Series



manual and automatic operation

The indication of the label in the present position is also done via the present sensor. With an additional accessories interface status reports like "label in present position" or "printer offline" can be send to an external application.

PS 5: Peel-off adapter for the A-Series automatic operation



The peel-off adapter runs without an optical sensor. The transfer of the label by an applicator or roboter is generated by an external signal. All other functions are identical to PS6.

Present trigger for PS5 and PS6



To start the print and the presenting of the next label a connection of a present trigger or foot switch is possible.



Basic device

Printing and Tearing off Labels

After printing, labels and continuous material can be torn off using the tear-Off plate.

PS7: Pause adapter for the A-Series



Via the accessories interface the print job can be interrupted and the status of the printer can be requested in all A-Series printers.



R-Version with internal rewinder

Internal Rewinding of Labels

Label rolls up to 145 mm/5.7" diameter can be rewinded with the internal rewinder after printing.



Basic device

Cutting Labels

The cutter is used to cut labels, cardboard, textil or plastic foils or even heat-shrinkable tubes one label after the other, after a certain number of labels or at the end of the print job. We recommend that you test very rigid or thin material in advance.

The cutter tray is useful for collecting cut labels that are a width of 30 - 116 mm/1.18 - 4.56" and a height of 12 - 100 mm/0.47 - 3.93". The maximum stacking height is 36 mm/1.41".



Basic device

External Rewinding of Labels

Label rolls up to 210 mm/8" diameter

The rewinder is fixed direct to the transfer printer. The winding can be inside or outside by choice.



External Operation Panel

When using the system in automated production lines it is possible to connect additionally an external operation panel. This may be used as desk top or for integration. With a USB cable it is connected to the USB Master interface of the printer (order separately).

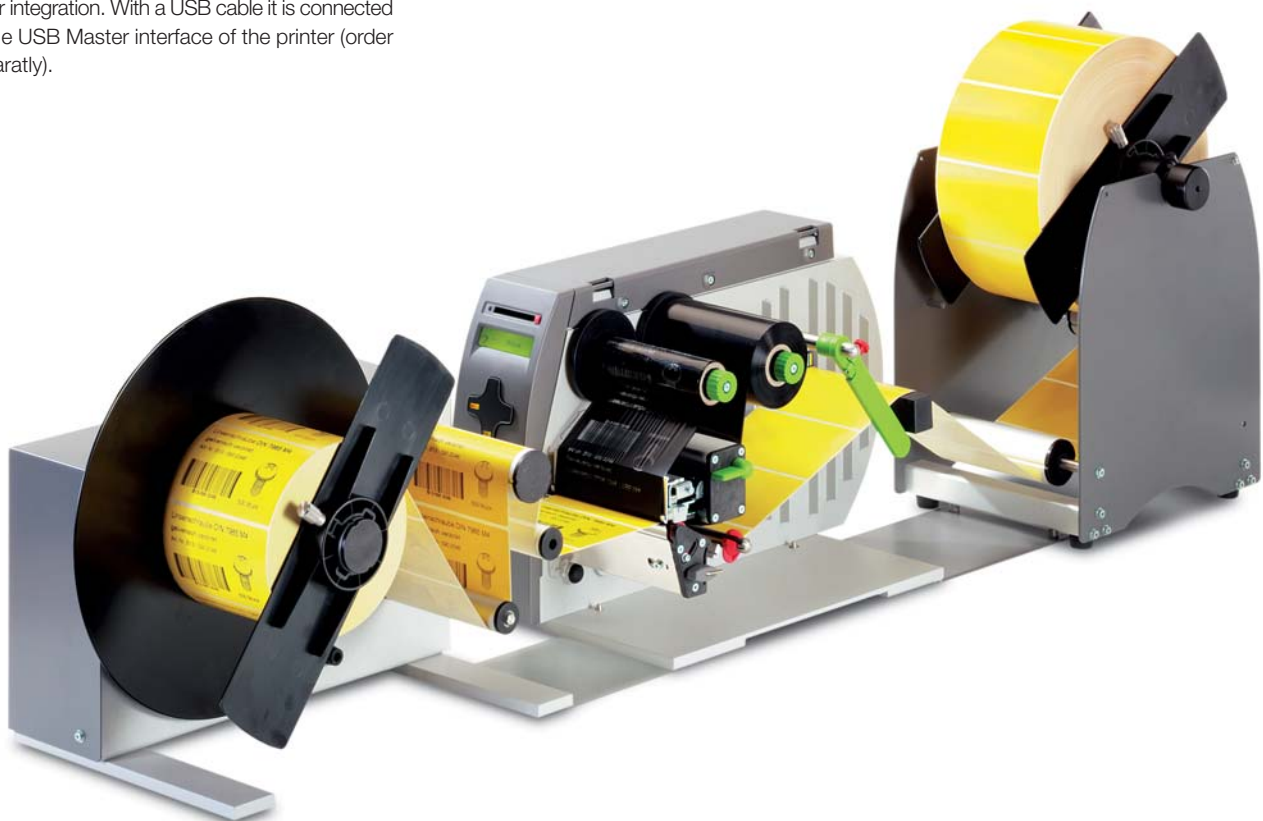


Direct Keyboard and Scanner Connection for Stand-Alone Mode

With keyboard or scanner the printers can be used without a PC in stand-alone mode.

The PC keyboard will be connected to the USB Master interface of the printer. If keyboard and scanner will be operated at the same time, a hub is needed.

Label formats, fonts, standard texts and graphics are stored on the CompactFlash-memory card.



External Rewinding of Labels

Label rolls up to 300 mm/11.81" diameter

With the built-in power supply the re-winder is operated independent to the printer. The guide is adjustable to the individual label exit height of several models of printers.

Barcode Tester (without picture)

The built-in scanner tests the barcodes directly after printing. If the barcode is not readable the printing process will be stopped at once so the faulty label can be removed. The barcode tester reads most linear barcodes positioned along the printing direction.

External Unwinding of Labels

Label rolls up to 300 mm/11.81" diameter

The un-winder works with inside or outside wound label rolls.

Adapter plate for A/M-Series

With the adapter plate the correct position of the re- and un-winder to the printer is fixed.

The A 1000 Applicator for Real Time Print and Apply

The applicator A 1000 represents, in combination with the thermal transfer printers A3 and A4, the inexpensive solution both for the semi-automatic labeling and for the integration into automated production lines.

For Small and Big Labels

Labels with a height of 25 - 150 mm and with a width of 25 - 116 mm may be applied. The printer enables to use label rolls with a diameter of up to 210 mm.

Quick Assembly

Like any other accessory, the applicator is plugged into the printer with two stoppers and fixed with only one screw.

Variable Product Heights

By means of the pneumatic cylinder with a stroke of 300 mm it is possible to compensate differences in product heights of up to 150 mm. It is also possible to use cylinders with a longer stroke.

Simple Adjustment

Four screws are necessary to adjust the tamp pad according to the dispensing edge. The sequence of the whole cycle may be optimized during the test operation at the operator panel.

High Process Reliability

The supporting air jet streaming and the vacuum as well as the speed of the cylinder are adjustable. For highly sensitive products and packaging the pressure to apply labels may be reduced to less than 1 kg. Consequently there is no risk of injury. To avoid contamination within the vacuum channels these are cleaned by air pressure impulse at the end of each application.



Long Operating Life without Wearing

The guides have ball bearings which avoid wearing and guarantee more than 2 million cycles

PLC Interface

For all status and control signals



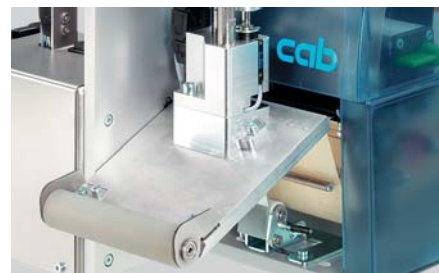
Tamp Pad

During this print and apply cycle the product remains in fixed position. The universal tamp is covered by a foil. According to the size of the label the holes may be pierced. On request, the tamp pads are customized to the dimensions of the label sizes.



Blow Pad

For applying pressure to sensitive products the label may be blown on to the product by the supporting air jet stream. The print and apply cycle performs in a fixed position or in linear movement of the product. The blow pad moves to a pre adjusted position approx. 10 mm away from the product.



Roll on Pad

Using the roll on pad the label is dispensed until touching the roller. The tamp pad moves on top of the product. The label is then rolled on and applied by the movement of the product.



Lower Frame

The lower frame may be customized according to the special requirements regarding width and height. The print and apply system is positioned by using two bolts. The exact position of the system may be adjusted on a guide rail.



Stand A 1600

For great stability the stand is made of aluminum profiles so the print and apply system is ready for use on any automated production line. Also it can easily be adjusted in height and width to fit any product.

The guide rollers allow for smooth movement and transporting while the adjustable mounting pads allow easy positioning for the print and apply system for operation.

The print and apply system is mounted on a base plate that is 10 mm thick and is fixed using only a clamp.



Present Trigger/Foot Switch

The present trigger or foot switch can be used for semi-automatic applications.



Light Barrier

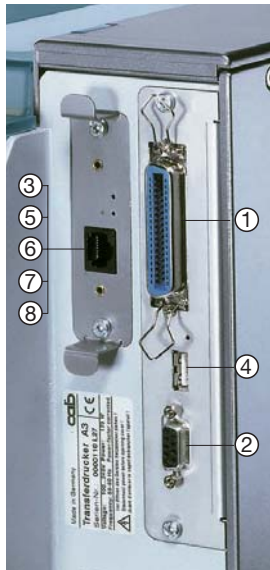
A light barrier or sensor can be mounted to automatically recognize a product on a conveyor belt.



Interface Plug

Easily connected using simple clip screws.

Interfaces for every Application



PC-Connections

1. Bi-directional Centronics interface in acc. with IEEE 1284
2. Serial RS232 C-interface up to 230.400 Baud
3. USB-slave interface

Stand-Alone-Mode

4. The USB-master interface for connecting PC keyboards or scanners

Network Connection

5. Ethernet 10/100 Base T interface with TCP/IP protocol
Printing with LPR/LPD or Raw IP-Printing
IP address can be set manually or obtained via DHCP
Status inquiry and settings via internet browser
FTP for firmware updates, control of CompactFlash card files
Messages can be sent via email or SNMP
Time and date can be synchronized with a time server
6. Wireless LAN connection with optional bridge for every operation system

Industrial Serial Interface

7. Serial RS422 interface for long distance communication
8. Serial RS485 interface for networking up to 26 printers

Connection to IBM Host Computer

9. Twinax Converter for connection to IBM AS 400
10. Coax-Converter for connection to IBM 3270



Programming

Direct Programming

cab printers can easily be controlled using direct programming. The printer language „J-Script“ is easy to understand and the printer can be quickly integrated into a system. In the grey box you see an example from the programming manual.

```
J
H 100
O R
S I1;0,0,68,70,100
T 10,10,0,5,pt20;sample
B 10,20,0,EAN-13,SC2;401234512345
G 8,3,5,0;R:30,9,0,3,0,3

A 1
```

Job start

Speed setting (100mm/sec)
Orientation Rotated by 180°
Size of the Label (100x68mm, gap 2mm)
Text line/font:Swiss bold, 20 pt
Barcode EAN 13, size SC 2
Graphic, Rectangle 30x9mm,
Line thickness 0.3mm
Amount of labels (in this sample 1)

Connection to Host Applications

It is a simple task to link the transfer printer with other host applications with the CompactFlash memory card which allows to store label formats and fixed data. The host computer simply transfers the required variable data to the printer. The example here shows one possible connection to SAP R/3.

Label design
with
labeling software

Replace file
loaded in
SAPScript

Exchange of
variable data
with SAPScript
and print out

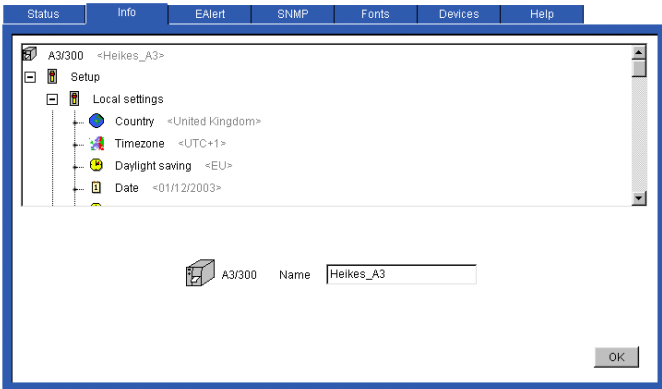
Upload-Methode SAP R/3 note no. 135 894

Scale connection

The connection to scale systems and automates are very easy. With the ABC-programing the printer is very flexible interpreting and using foreign data streams. For this reason the printer is able to control the complete process.

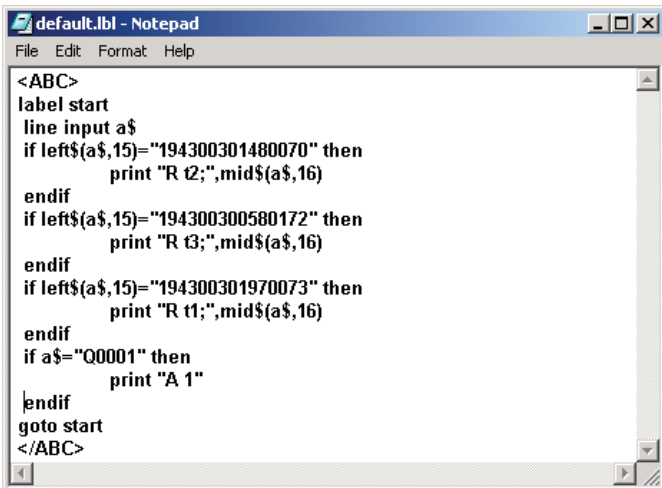


Software and Tools



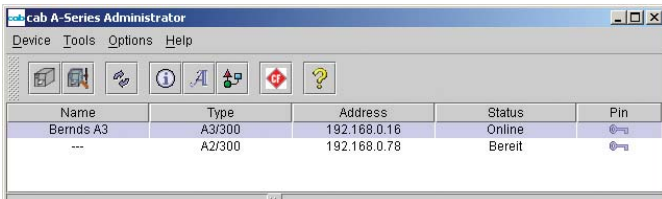
Configuration through Intra- and Internet

With the built in HTTP and FTP server you can monitor and configure the printer with standard programs like webbrowsers and FTP clients, also updating the firmware and administrate the memory card. Status, warning and error messages can be send by the buildt in SNMP and SMTP client to administrators and user via email or as a SNMP datagramm.



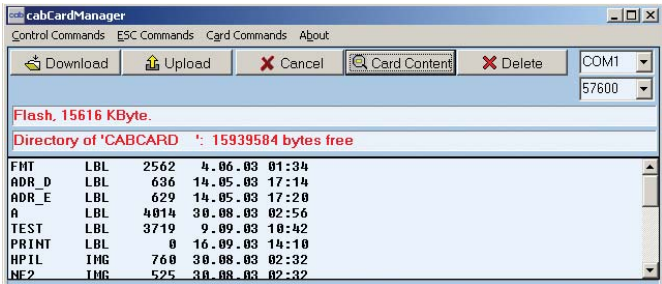
abc - Basic Compiler

The Basic compiler is an integral part of the printers firmware. It enables the printer, using simple basic programming, to process data, before it has been passed to the pre-printing process. By Using this method printers from other manufactures can be replaced or data streams to other systems such as scales or a PLC be can be integrated and the relevant information printed in various label formats.



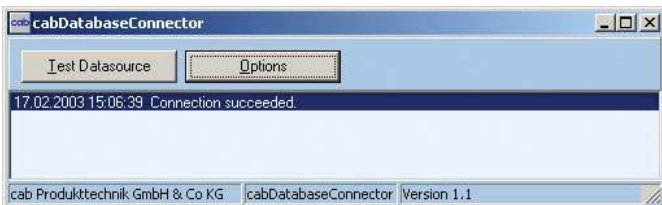
Administrator Tool

With the cab A-Series administrator tool, many printers can be controlled from one place in a network. The print status, control and administration of the CompactFlash card as well as the updating of the printer firmware and the PIN administration can be done efficiently from only one network-PC.



cab Card Manager

With the Card manager you administrate via the RS232 interface to the memory card. Label formats, true type fonts, graphics and complete data-bases can be quickly and easily downloaded, accessed and modified.



Database Connector

The Database connector enables all A-Series printer in stand-alone mode to request data via TCP/IP direct from a central SQL-capable data base and print them on the label. While printing data can be send back and altered in the data base using the Database connector.

Technical Data Transfer Printers and Accessories

		M4		A3		A4		A6	A8
Printing method		Thermal direct/Thermal transfer							
Printhead system	Thick film	■	■	■	■	–	–	■	■
	Thin film	–	–	–	–	■	■	–	–
Printhead resolution dpi		203	300	203	300	300	600	300	300
Print speed mm/s		150	100	200	150	250	100	200	150
Print width up to mm		104	108.4	104	108.4	105.6	105,6	162.6	216
Labels									
Material - labels, continuous mat. on rolls or leporello		Thermal and standard paper, cardboard, textii ¹ , plastic foil: PE, PP, PVC, PA							
Material thickness mm / Weight g/m ²		0.07 - 0.3/ 60 - 300							
Media roll									
	Total diameter up to mm	210							
	Core diameter mm	38.1 - 76							
	Winding direction	inside or outside (internal rewind only outside)							
Width of liner mm		120						180	235
Label width mm		12 – 116						50 – 176	50 – 220
Label width when dispensing ² min. mm		25						50	–
Label height mm		5 - 1.000				5 - 250		6 - 1.000	10 - 650
Label height when dispensing ² min. mm		12						25	–
Ribbon									
Ink		ink inside or ink outside							
Roll diameter up to mm		80							
Core diameter mm		25							
Running length variable up to m		500							
Width up to mm		114						165	220
Internal rewinder									
Total diameter up to mm		145							–
Core diameter mm		38.1							–
Winding direction		only outside							–
Dimensions									
Height /Depth mm		274/446							
Width mm		242						302	352
Weight kg		9				11		13	15
Energy consumption max. W		200		250			500		
Label sensor									
See-through/Reflective sensor from below, Adjustable mm		4 – 57.5							
Electronics									
Processor 32 Bit ColdFire		64 MHz				144 MHz			
RAM		8 MB				16 MB			
ROM		4 MB Flash		2 MB Flash		4 MB Flash			
Slot for memory card: CompactFlash Type I		■		■		■			
Real time clock/date		■		■		■			
Operation panel as Navigatorpad: keys/backlights		3/4		4/8		4/8			
LCD-graphic display: text 2 lines/20 characters, symbols		–		■		■			
Interfaces									
Serial RS 232 C 1,200 bis 230,400 bauds/8 bit		■		■		■			
RS 422, RS 485 1.200 bis 230,400 bauds/8 bit		–		□		□			
Parallel Centronics bidirectional acc. IEEE 1284		–		■		■			
Ethernet 10/100 Base T, LDP, RawIP-Printing, DHCP, HTTP, FTP, SMTP, SNMP, Time		■		□		□			
Wireless LAN - on request		□		□		□			
USB Slave for PC connection		■		□		■ Standard □ Option			
Twinax/Coax Converter for IBM connection		–		□		□			
USB Master for keyboard/scanner		–		■		■			
Peripheral connection		■		■		■			
Accessories									
Cutter		□		□		□			
External rewinder		□		□		□			
External unwinder		□		□		□			
Present trigger		–		□		□			
PC-keyboard USB with 4 Hub		–		□		□			
Compact PC-keyboard USB		–		□		□			
Memory card									
CompactFlash Type I 16 up to 512 MB		□		□		□			
Power supply									
Power supply		100 – 240 V ~ 50/60 Hz, PFC							
Operating temperature/humidity not condensing		10 – 35 °C/30 – 85%							
Safety regulations		CE, FCC class 1							

¹ depending on material limitations

² Depending on label size, material and adhesive limitations are possible.

We therefore recommend to test the dispense ability and print tolerances in advance.

	M4 / A3 / A4 / A6 / A8
Font types	5 Bitmap-Fonts incl. OCR-A, OCR-B and 3 vektor fonts Swiss 721, Swiss 721 Bold and Monospace 821 available internally, loadable TrueType fonts
Character sets	Windows 1250 up to 1257, DOS 437, 737, 775, 850, 852, 857, 862, 864, 866, 869, EBCDIC 500, ISO 8859-1 up to -10, -13 up to -16, WinOEM 720, UTF8, Macintosh Roman, DEC MCS, KOI8-R. All West and East European latin, cyrillic, greek, hebrew and arabic characters are supported.

Font sizes

Bitmap fonts	Size of width and height 1 - 3 mm scalable factor 2 - 10
Vektor fonts	Size of width and height 0.9 - 128 mm infinitely scalable
Font formats	Bold, italic, underlined, outline, negative, grey, vertical, depending on character fonts
Font width	Extended, compressed

Print directions

Bitmap fonts/barcodes	0°, 90°, 180°, 270°
Speedo-/TrueType fonts	360° of rotations in 1°, mirrored label image

Graphics

Graphic elements	Line, arrow, box, circle, ellipse, filled segments, filled segments with fading
Graphic formats	PCX, IMG, BMP, TIF, GIF, MAC

Barcodes

Linear Barcodes	Code 39, Code 93	Interleaved 2/5
	Code 39, Code 93	Ident and lead code of Deutsche Post AG
2D-Barcodes	Code 128 A, B, C	Jan 8, 13
	Codabar	MSI
	EAN 8, 13, 128	Plessey
	EAN/UCC 128	Postnet
	EAN/UPC Appendix 2	RSS 14
	EAN/UPC Appendix 5	UPC A, E
	FIM	HIBC
	Aztec, Codablock F, Data Matrix, PDF 417, Micro PDF, UPS Maxicode, QR-Code	
	All barcodes variable in height, module width and ratio. Optionally with check digit, printed characters and start/stop code depending on barcode type..	

System checks

Stop of printing if	End of ribbon End of labels /continuous material Printhead open (only A-Series)
Test facilities	System diagnosis of memory when powerd ON System diagnosis of printhead when powerd ON (only A-Series), Print-out of system data
Status reports	Total print length Total operation hours

Software

Windows driver	95, 98, ME, 2000, XP Windows NT starting with version 4.0
cablabel	As Lite free version in the content of delivery. With the Advanced, Professional and Expert versions you create even complex labels.
Tools	Administrator tool for printers with Ethernet card to administrate several printers
abc-Compiler	Basic compiler to run individual programs

Cutter

	M4	A3/A4	A6	A8
Material weight up to g/m ² Type 1	-	200	-	-
Type 2, 3, 5	300	300	300	300
Type K	-	500	-	-
Material width up to mm	120	120	180	232
Material height from mm	2 - depending on material limitations			

External Rewinder

Total diameter mm	ER 1, 2, 3	210		
	ER 4	210	-	-
	ER 4, 6, 8	300		
Core diameter mm		40 (with or without cardboard core)		
		76 (with cardboard core)		
Material width up to mm		120	180	235
Winding speed up to mm/s		300	250	200
Winding direction		inside or outside		

External Unwinder EU 4, 6 and 8

Total diameter mm	300			
Core diameter mm	40 (with or without cardboard core)			
	76 (with cardboard core)			
Material width up to mm	120	180	235	
Winding direction	inside or outside			

PC-Keybaord USB

No. of keys	-	104 or 105 dep. on country
Dim. (length x width) mm	-	470 x 195
Interface at transfer printer	-	USB
for additional accessories	-	4 port buspowered Hub
Manufacturer / Type	-	Cherry / Classic Line G81 3000

Compact PC Keyboard USB

No. of keys	-	86
Dim. (length x width) mm	-	282 x 132
Interface at transfer printer	-	USB
Manufacturer / Type	-	Cherry / Slim Line G84 4100

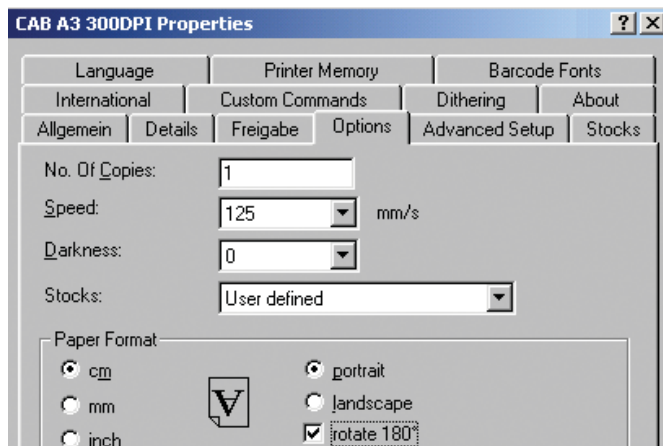
Applicator for A3/A4

	Type A 1000		
Label transfer method	Tamp	Roll on	Blow
Label width in mm	25 - 116	25 - 116	25 - 100
Label height in mm	25 - 150	80 - 150	25 - 100
Cylinder stroke in mm		220/300	
Stoke of tamp below printer mm		70/150	
Compressed air supply in bar		6 - 8	
Requirements to product surface		flat	
Product height			
variable	■	■	-
fixed	-	-	■
Product			
fixed	■	-	■
linear movement	-	■	■
Labeling direction			
vertically downwards		■	

Stand for A3/A4

	A 1600
Height total mm	1600
Height of product up to mm	1500
Overhang til middle of label mm	230 - 500
Chassis frame (distance adjust feet)	
Width mm	600
Depth mm	860
Height mm	140

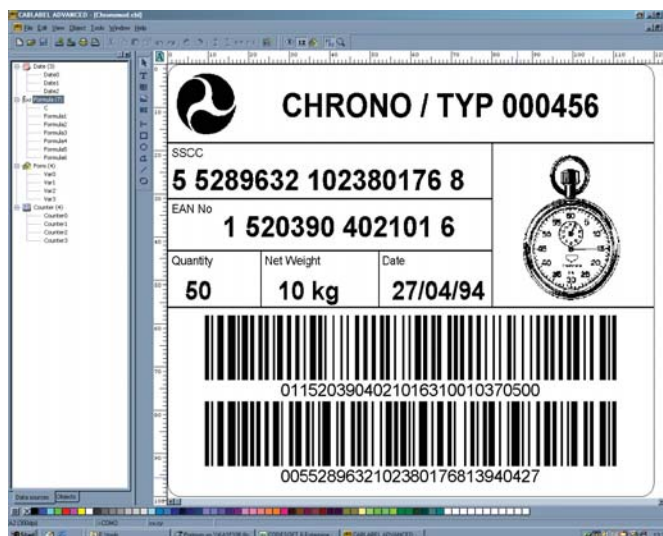
Design your Labels quick and easy



Free cab Windows Driver - with every Printer

With every shipped printer you get a free Windows Driver. You can create and print your label using a Windows based program such as MS Word, Excel, Access, Works, Corel Draw, and more.

The Windows Driver runs under Windows 95, 98, ME, 2000, XP and NT 4.0.



Labeling Software

cablabel is the cost effective software to create professional labels especially for cab printers. More extensive software packages for your PC such as Easylab, Codesoft, Nice Label, Bartender and LabelMatrix allow to design label formats to meet highest demands and print them on our printers.



Quality Got a Look

An optimal arrangement of a label is a free creation of character sizes, fonts and directions. The printer of the A-Series offers a selection of internal bit-map - and vector fonts and you can download additional TrueType fonts. A-Series supports the most popular codepages. For this reason, country specific characters are printable.

Print all Popular Barcodes

The Printers of the A-Series prints all popular linear or 2D-barcodes clearly and readable.

Graphics

Several graphic formats (PCX, IMG, BMP, TIF and others) and graphic elements (line, arrow, box, circle, ellipse, filled segments and others) could be integrated in the label.

Delivery Program Transfer Printer



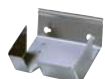
	Basic device	R-version	P-version (without present sensor)
tear off	■	□	□
internal rewind	—	■	□
dispense	—	—	■
cut	□	□	□
external rewind	□	□	□

■ Standard
□ Accessories

	Printhead	Part No.	Description	Part No.	Description	Part No.	Description
M4 	203 dpi	5946730	Thermal-direct Printer M4/200	5946731	Thermal-direct Printer M4/200R	5947962	Thermal-direct Printer M4/200P
	203 dpi	5946720	Transferdrucker M4/200	5946721	Transfer Printer M4/200R	5947960	Transfer Printer M4/200P
	300 dpi	5946733	Thermal-direct Printer M4/300	5946734	Thermal-direct Printer M4/300R	5947963	Thermal-direct Printer M4/300P
	300 dpi	5946723	Transfer Printer M4/300	5946724	Transfer Printer M4/300R	5947961	Transfer Printer M4/300P
A3 	203 dpi	5946700	Thermal-direct Printer A3/200	5946701	Thermal-direct Printer A3/200R	5947957	Thermal-direct Printer A3/200P
	203 dpi	5942300	Transfer Printer A3/200	5942315	Transfer Printer A3/200R	5947950	Transfer Printer A3/200P
	300 dpi	5946703	Thermal-direct Printer A3/300	5946704	Thermal-direct Printer A3/300R	5947958	Thermal-direct Printer A3/300P
	300 dpi	5942301	Transfer Printer A3/300	5942316	Transfer Printer A3/300R	5947951	Transfer Printer A3/300P
A4 	300 dpi	5946004	Transfer Printer A4/300	5946009	Transfer Printer A4/300R	5947952	Transfer Printer A4/300P
	600 dpi	5946005	Transfer Printer A4/600	5946010	Transfer Printer A4/600R	5947953	Transfer Printer A4/600P
A6 	300 dpi	5946706	Thermal-direct Printer A6/300	5946707	Thermal-direct Printer A6/300R	5947959	Thermal-direct Printer A6/300P
	300 dpi	5943203	Transfer Printer A6/300	5943204	Transfer Printer A6/300R	5947954	Transfer Printer A6/300P
A8 	300 dpi	5946709	Thermal-direct Printer A8/300				
	300 dpi	5945800	Transfer Printer A8/300				
		5946600	RFID Read-Write Unit A3/4	All printers starting with the A3 could be supplied from our works with an RFID Read-Write Unit for the marking of smart labels.			
		5946601	RFID Read-Write Unit A6				
		5946602	RFID Read-Write Unit A8				

Contents of delivery: Transfer Printer, Power Supply, Operation manual, Windows driver, cablabel X-Lite, Service manual on CD-ROM

Accessories Transfer printer



without picture



Part No.	Description	
5942308	Cutter 1 200 g/m ²	A3 / A4
5947030	Cutter 5 300 g/m ²	A3 / A4
5948030	Cutter 5 300 g/m ²	M4
5947049	Cutter K 500 g/m ²	A3 / A4
5943256	Cutter 2 300 g/m ²	A6
5945801	Cutter 3 300 g/m ²	A8
5946995	Cutter tray 4	M4 / A3 / A4

5942353	Present sensor PS6 manual/autom. operation	A3 / A4 / A6 for P-version
5946900	Present sensor PS8 manual operation	M4 / A3 / A4 / A6 for P-version
5946120	Peel-off adapter PS5 automatic operation	A3 / A4 / A6 for P-version
5946146	Pause adapter PS7	A3 / A4 / A6 / A8

5948102	External rewinder ER1 Roll diameter 210 mm	M4 / A3 / A4
5943251	External rewinder ER2 Roll diameter 210 mm	A6
5945802	External rewinder ER3 Roll diameter 210 mm	A8

5948100	External rewinder ER4 Roll diameter 210 mm	M4 / A3 / A4 OM*
5946090	External rewinder ER4 Roll diameter 300 mm	M4 / A3 / A4 OM*
5946420	External rewinder ER6 Roll diameter 300 mm	A6 OM*
5945804	External rewinder ER8 Roll diameter 300 mm	A8 OM*
5948170	Adapter plate for ER/EU 4, 6, 8	M4/A3/A4/A6/A8

OM* = also for printers of other manufactures

5946091	External unwinder EU4 Roll diameter 300 mm	M4 / A3 / A4 OM*
5946421	External unwinder EU6 Roll diameter 300 mm	A6 OM*
5945806	External unwinder EU8 Roll diameter 300 mm	A8 OM*

OM* = also for printers of other manufactures

5946244	Tear-off plate TP4	M4 / A3 / A4 for R/P-Version
5946414	Tear-off plate TP6	A6 for R/P-Version

5946467	Rewind guide RG4	M4 / A3 / A4 for P-Version
5946415	Rewind guide RG6	A6 for P-Version

Accessories Applicator



Part No.	Description	for printer
5949002	Tamp applicator A 1000-300	A3 / A4

5949072	Universal tamp pad A1112 70x60	Applicator A 1000
5949075	Universal tamp pad A1112 90x90	Applicator A 1000
594xxxx	Tamp pad A1112 wxh	Applicator A 1000
5949076	Universal tamp pad A1312 116x102	Applicator A 1000
5949077	Universal tamp pad A1312 116x152	Applicator A 1000
594xxxx	Tamp pad A1312 wxh	Applicator A 1000
594xxxx	Blow pad A2111 wxh	Applicator A 1000
594xxxx	Roll on pad A1411 wxh	Applicator A 1000

5949093	Lower frame 340x160	A3 / A4
594xxxx	Lower frame bxh	A3 / A4

8913600	Stand A 1600	A3 / A4
---------	--------------	---------

Operation panels

Part No.	Description	for device
5946930	External operation panel	A3 / A4 / A6 / A8
	PC-keyboard USB with 4 Hub/Cherry Classic Line G81 3000	A3 / A4 / A6 / A8
	Compact PC-keyboard USB / Cherry Slim Line G84 4100	A3 / A4 / A6 / A8
5942345	Present trigger TR1	Peel-off Ad. PS5 Present Sen. PS6 Applicator A 1000
5535901	Foot switch	Peel-off Ad. PS5 Present Sen. PS6 Applicator A 1000
5941526	Light barrier to start process PLC	Peel-off Ad. PS5 Present Sen. PS6 Applicator A 1000

Delivery Program Transfer Printer

Memory cards



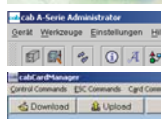
Part No.	Description	for printer
5561028	CompactFlash type I memory card 32 MB	M4/A3/A4/A6/A8
5561029	CompactFlash type I memory card 64 MB	M4/A3/A4/A6/A8

Interfaces



Part No.	Description	for printer
5942361	USB interface with connect. cable 1.8 m	A3/A4/A6/A8
5942360	RS422/485 interface	A3/A4/A6/A8
5942363	Fast-Ethernet interface	A3/A4/A6/A8
5561034	Wireless bridge with connecting cable and power supply	M4/A3/A4/A6/A8
5551279	Twinax converter for IBM AS 400	A3/A4/A6/A8
5551280	Coax converter for IBM 3270	A3/A4/A6/A8

Software



Part No.	Description	for use with
5580153	cablabel 6 X-Lite	98/ME/2000/XP/NT
5580150	cablabel 6 Advanced	98/ME/2000/XP/NT
5580151	cablabel 6 Professional	98/ME/2000/XP/NT
5580152	cablabel 6 Expert	98/ME/2000/XP/NT
5580154	cablabel 6 run Time	98/ME/2000/XP/NT
5580215	Admin Tool	98/ME/2000/XP/NT
5580216	cab Card Manager	98/ME/2000/XP/NT
5580210	Database Connector	98/ME/2000/XP/NT

Connecting cables



Part No.	Description	for printer
5550818	Cable RS232 C, 9/9-pin, length 3 m	M4/A3/A4/A6/A8
5550771	Cable parallel Centronics, length 1.8 m	A3/A4/A6/A8
5901616	Cable USB, Length 1.8 m	M4/A3/A4/A6/A8
5917651	SUB-D-plug 25-pin for SPS Phoenix Contact No. 27 61 62 2	Applicator A 1000
5917652	SUB-D-plug 15-pin for SPS Phoenix Contact No. 27 61 60 6	Peel-off Ad. PS5 Present Sen. PS6 Applicator A 1000

Spare parts



Part No.	Description	for printer
5942370	Printhead 203 dpi type 4203	M4 / A3
5942371	Printhead 300 dpi type 4300	M4 / A3
5946015	Printhead 300 dpi type 4300S	A4
5946006	Printhead 600 dpi type 4600	A4
5943245	Printhead 300 dpi type 6300	A6
5945805	Printhead 300 dpi type 8300	A8
5942372	Driver roller DR4	M4 / A3 / A4
5943210	Driver roller DR6	A6
5945822	Driver roller DR8	A8
5946235	Rewind assist roller RR4	M4 / A3 / A4
5946412	Rewind assist roller RR6	A6

Pictures in this brochure mainly show the A3 printer. However, the most functions are similar to all other A-Series printers. The M4 has different features. Please pay attention to this.

All specifications about delivery, design and technical data are given to the best of our current knowledge and are subject to change without prior notice.



cab Germany

cab-Produkttechnik GmbH & Co KG

Postfach 1904 D-76007 Karlsruhe
Wilhelm-Schickard-Str. 14 D-76131 Karlsruhe
Germany

Phone +49 721 6626-0
Fax +49 721 6626-249

www.cabgmbh.com
info@cabgmbh.com

All specifications about delivery, design and technical data are given to the best of our current knowledge and are subject to change without prior notice.

cab France

cab technologies s.à.r.l.
BP 20
Z.A. Nord du Val de Moder
F-67350 Niedermodern
France

Téléphone +33 388 722 501
Télécopie +33 388 722 502

www.cabgmbh.com
info@cab-technologies.fr

cab USA

cab Technology Inc.
90 Progress Avenue Unit 2
Tyngsboro MA, 01879
USA

Phone +1 978 649 0293
Fax +1 978 649 0294

www.cabtechn.com
info@cabtechn.com

cab España

cab España S.L.
c/ Riera Figuera Major, 21 bajos
E-08304 Mataró (Barcelona)
España

Teléfono +34 937 414 605
Telefax +34 937 414 731

www.cabgmbh.com
info@cabsi.com

cab Russia

OOO cab Technology
ul. Spiridonovka 16, stroenie 1
RUS-123001 Moscow
Russia

Phone +7 095 937 38 79
Fax +7 095 202 03 15

www.cabgmbh.com
cabrus@co.ru

Representatives in other countries on request.